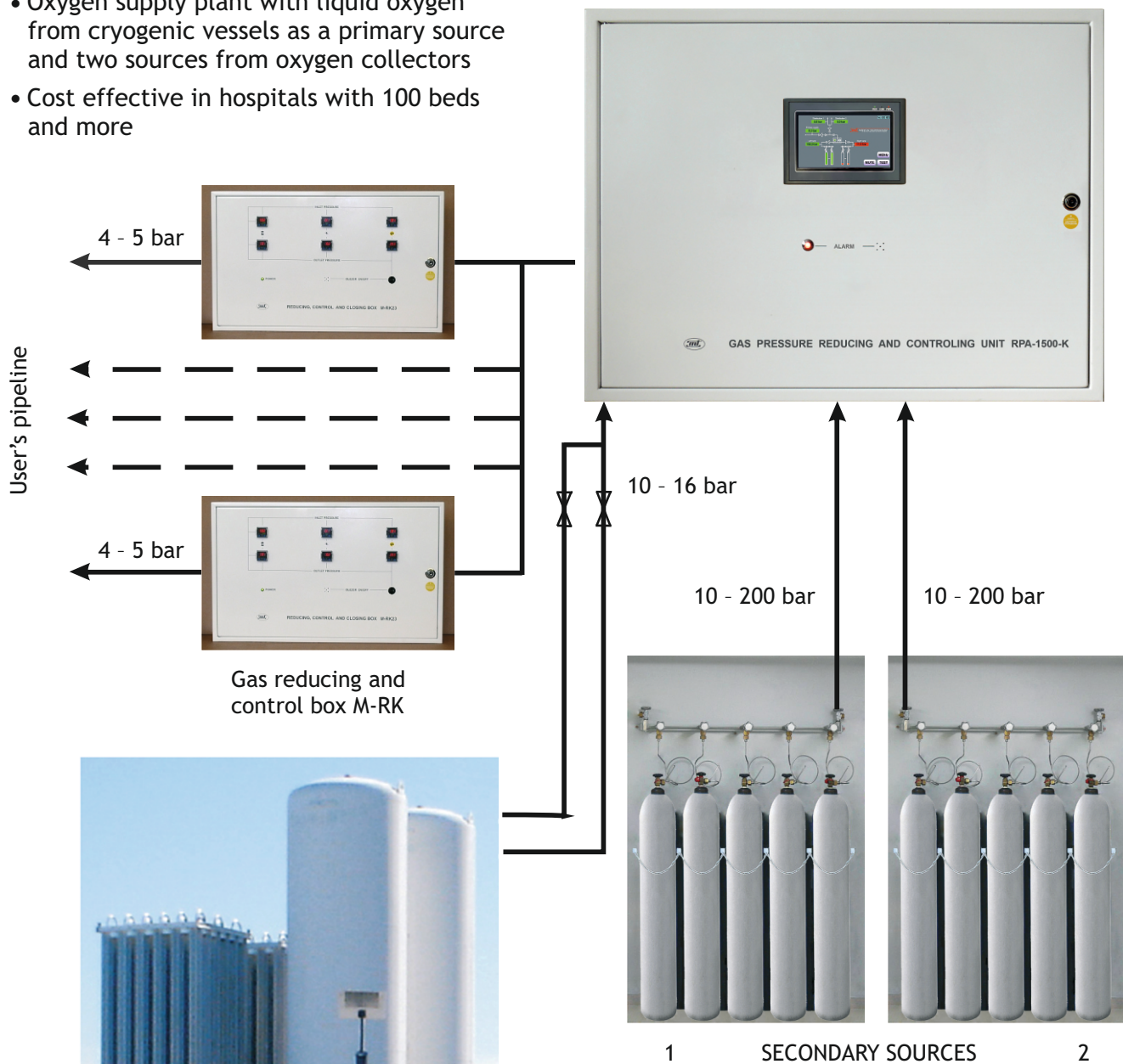


CENTRAL GAS SUPPLY

OXYGEN SUPPLY PLANT

- Oxygen supply plant with liquid oxygen from cryogenic vessels as a primary source and two sources from oxygen collectors
- Cost effective in hospitals with 100 beds and more

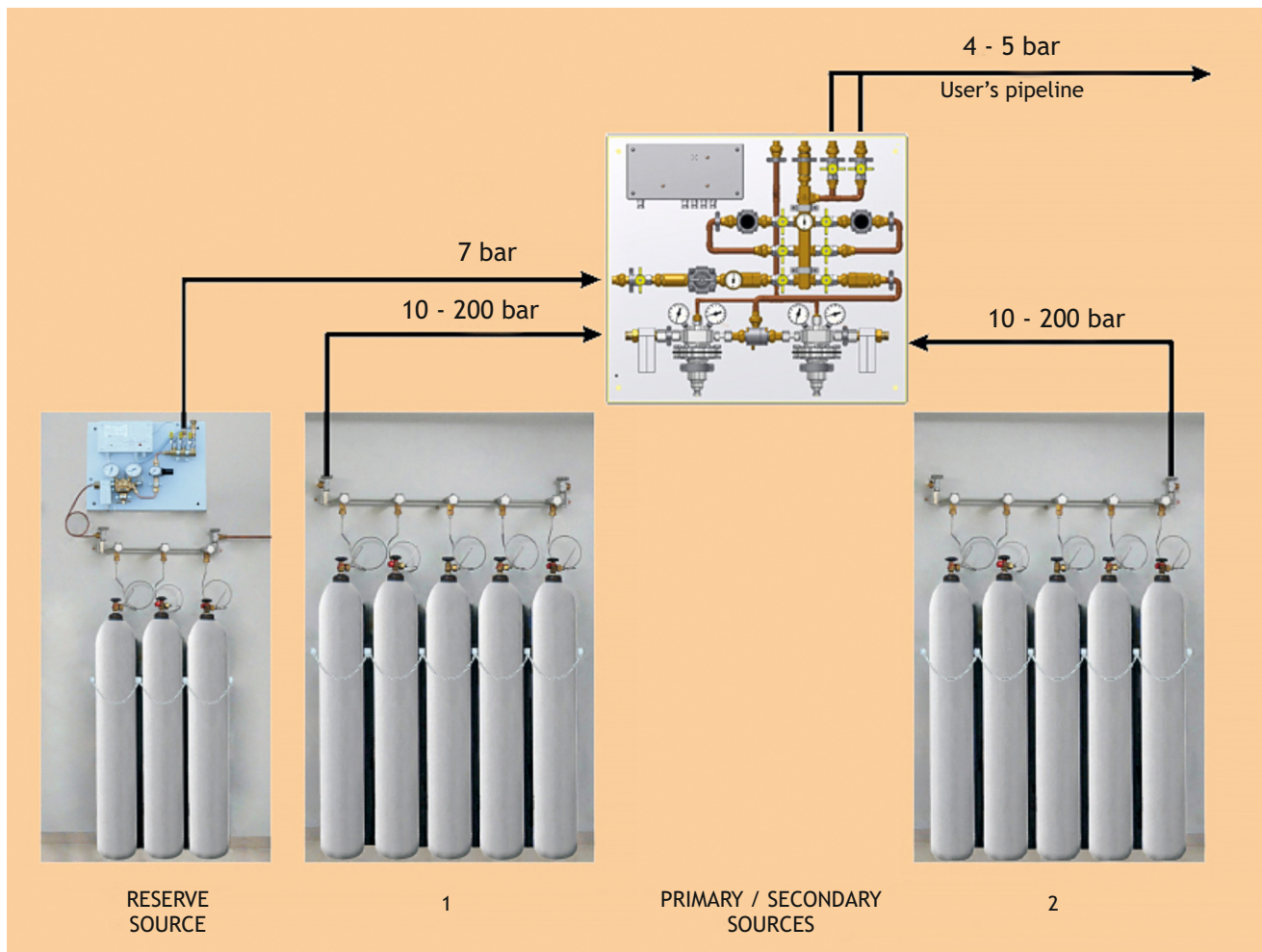


PRIMARY / SECONDARY SOURCES



1 SECONDARY SOURCES 2

- The capacity of cryogenic vessels from 3 m³ to 16 m³.
- Maximum oxygen flow from 700 l / min to 3000 l / min
- Oxygen output pressure from evaporators 12-18 bar
- For operation of stations with cryogenic vessels, reserve backup ramps are required depending on the oxygen flow from 10 to 60 cylinders



HIGH PRESSURE COLLECTORS



- With fixation of cylinders to the wall from 2x2 to 2 x10 cylinders
- M-R2N - for nitrous oxide
- M-R2C - for carbon dioxide
- M-R2O - for oxygen

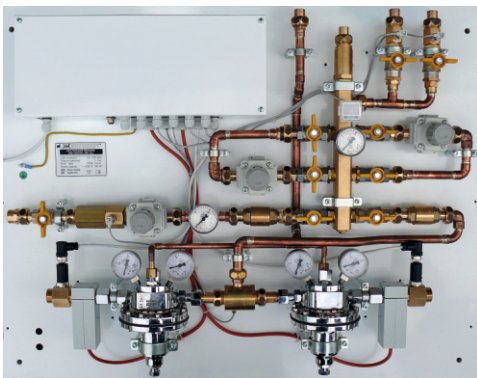


- With fixation of cylinders to the special frame from 2x8 and 4x8 cylinders
- M-R3N - for nitrous oxide
- M-R3C - for carbon oxide
- M-R3O - for oxygen

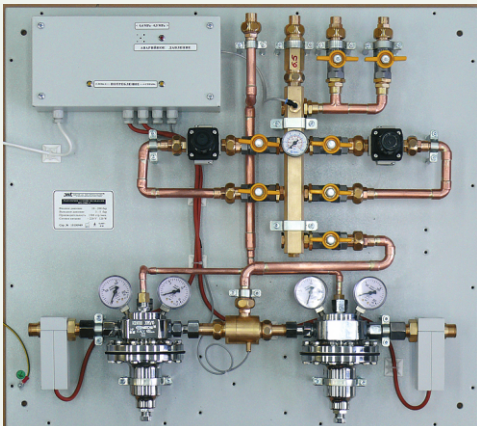
GAS PRESSURE REDUCING AND CONTROL UNITS

RPA 1500 K

- For connection of three supply sources
- Indication of supply source
- One inlet 7 -20 bar
- Two inlets 10 - 200 bar
- Two stage pressure adjustment
- Outlet pressure 3 - 10 bar



- Two parallel branches for pressure reduction
- Productivity up to 1500 l/min
- Digital pressure control
- Light and sound alarm system
- Heated high pressure reducers
- Safety valves



RPA 1500 B

- Two high pressure inlets 10 - 200 bar
- Two stage pressure adjustment
- Outlet pressure 3 - 10 bar
- Two parallel branches for pressure reduction
- Productivity up to 1500 l/min
- Indication of supply source
- Light and sound alarm system
- Heated high pressure reducers
- Safety valves

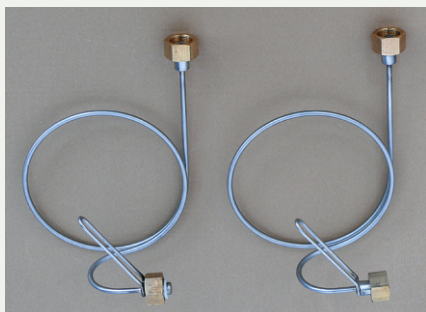
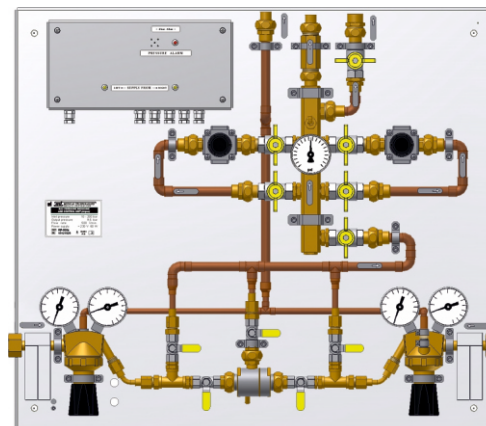


RP 500

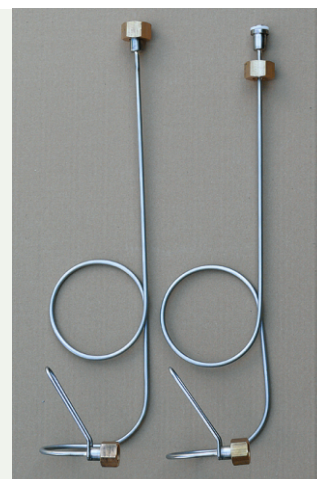
- For one manifold
- Two stage pressure adjustment
- Heated high pressure reducer
- Safety valve
- Pressure control of supply system
- Productivity up to 500 l/min

RPA 500 S

- For two collectors with automatic changeover
- Two stage pressure adjustment
- Heated high pressure reducers
- Safety valves
- Pressure control, transmission of alarm signal
- Indication of supply source
- Productivity to 500 l/min



- Semi-flexible stainless steel tubes with various types brass joints for connection of collectors and cylinders
- Maximum pressure up to 30 Mpa
- Connection joints for cylinders according to client's national standard



- Semi-flexible thick-walled copper tubes for connection of reducing device with high pressure collectors
- Maximum pressure to 300 bar

